

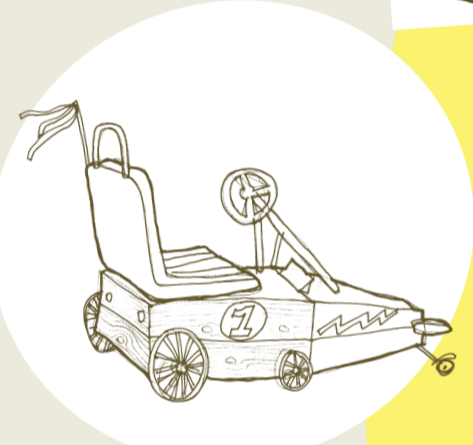
WILL YOU SEND BACK YOUR ACTUAL SOAPBOX, DECORATED WITH OR CONTAINING YOUR IDEAS?



OR WILL YOU SEND BACK YOUR IDEAS IN ANOTHER WAY, PERHAPS THROUGH PHOTOS OR FILM OF YOU USING YOUR SOAPBOX?

5. RETURN

IN MAY 2008 YOU WILL SEND BACK YOUR SOAPBOX AND THE FINDINGS FROM YOUR YEAR OF EXPLORATION TO SOUTHBANK CENTRE.



WHAT DO YOU THINK ARE THE BEST WAYS TO COMMUNICATE WHAT IS IMPORTANT TO YOU? THROUGH QUESTIONS, THROUGH ARGUMENTS, THROUGH SETTING AN EXAMPLE, THROUGH ART?

HAVE YOU LEARNT NEW THINGS ABOUT THE ISSUES THAT MATTER TO YOU?

HAVE YOUR IDEAS ABOUT WHAT IS IMPORTANT TO YOU CHANGED?

REFLECT

THINK ABOUT WHAT YOU HAVE LEARNT DURING YOUR EXPLORATION.

4.

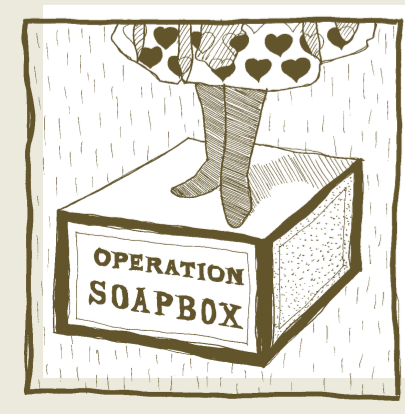
REMAKE

NOW IT'S TIME TO DO SOMETHING DIFFERENT WITH YOUR SOAPBOX!

3.

STAND ON IT, DRAW ON IT, PAINT ON IT, BASH IT ABOUT. THE ONLY LIMIT IS YOUR IMAGINATION. AS YOU EXPLORE HOW TO EXPRESS THE ISSUES, IDEAS AND OPINIONS THAT MATTER TO YOU.

THIS OPERATIONS MANUAL, OTHER LEARNING MATERIALS, AS WELL AS THE PROJECT WEBSITE AND REGULAR EMAIL UPDATES, WILL GIVE YOU INSPIRATION.

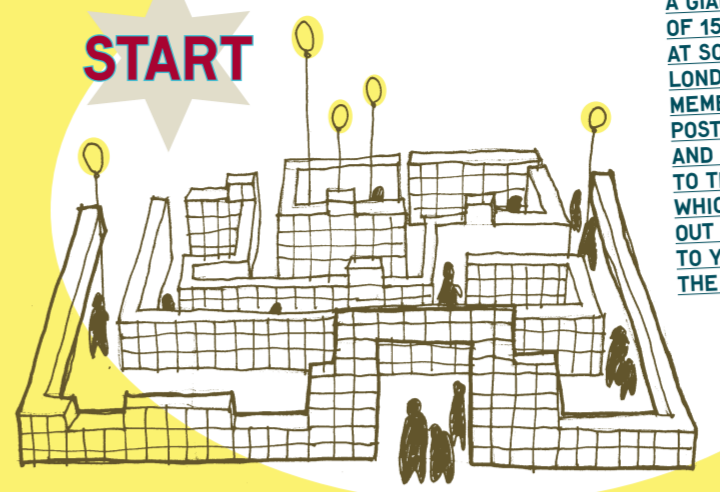


FINISH ?

IN JUNE 2008 THE REMADE SOAPBOXES AND OTHER FINDINGS ARE USED TO MAKE A NEW STRUCTURE INSPIRED BY THE THOUGHTS AND IDEAS THAT GROUPS SEND BACK. THIS FORMS THE HEART OF A NEW PUBLIC EXHIBITION TO SHOWCASE YOUNG PEOPLE'S WORK.



START



A GIANT MAZE IS BUILT OF 1500 SOAPBOXES AT SOUTHBANK CENTRE, LONDON IN JULY 2007. MEMBERS OF THE PUBLIC POST QUESTIONS, CONCERNS AND ISSUES THAT MATTER TO THEM ON THESE BOXES, WHICH ARE THEN SENT OUT AS SOAPBOX SATELLITES TO YOUNG PEOPLE AROUND THE UK.

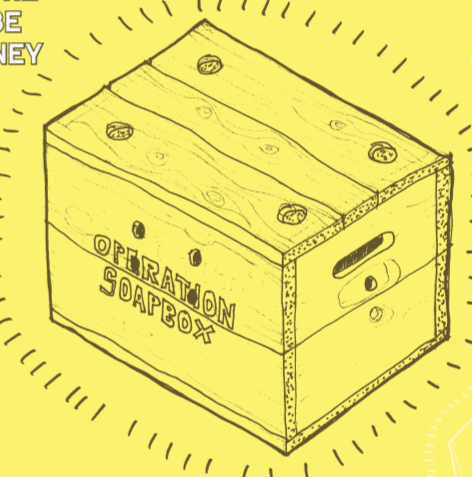
SOAPBOX OPERATIONS MANUAL

1. RECEIVE

THE SOAPBOX SATELLITE DOCKS IN YOUR SCHOOL, ONE OF HUNDREDS SENT OUT ALL AROUND THE COUNTRY. FOR THE NEXT FEW MONTHS, IT WILL BE YOUR COMPANION ON A JOURNEY OF CREATIVE EXPLORATION.

YOUR CHALLENGE TO USE YOUR SOAPBOX SATELLITE:

TO DISCOVER AN ISSUE OR ISSUES THAT MATTER TO YOU.



TO EXPLORE THE ISSUES AND THINK HOW YOU COULD COMMUNICATE THEM. THERE'S A LOT TO FIND OUT, BECAUSE YOU ARE GOING TO PRESENT THESE ISSUES TO OTHER PEOPLE AT THE END OF THE PROJECT. WHAT INTERESTING THINGS WOULD YOU TELL PEOPLE? WHAT ARGUMENTS DO YOU WANT TO MAKE?

TO PRESENT YOUR IDEAS IN AN INTERESTING, CREATIVE WAY, FOR AN EXHIBITION AT SOUTHBANK CENTRE, LONDON IN SUMMER 2008. THE BEST WAY TO COMMUNICATE WHAT MATTERS TO YOU MAY BE IN WRITING, AS A PAINTING OR COLLAGE, A FILM, A SOUND RECORDING, A SCULPTURE. EXPLORE WHAT WORKS BEST FOR YOU.

RESPOND

EACH SOAPBOX SATELLITE CONTAINS A QUESTION CONTRIBUTED BY A MEMBER OF THE PUBLIC AT SOUTHBANK CENTRE IN SUMMER 2007.

2.

START YOUR YEAR OF EXPLORATION BY:

RESPONDING TO THAT QUESTION: DOES IT INTEREST YOU TOO? WHY DO YOU THINK THE PERSON ASKED IT? WHAT DOES IT MAKE YOU THINK ABOUT? HOW MIGHT YOU ANSWER IT?



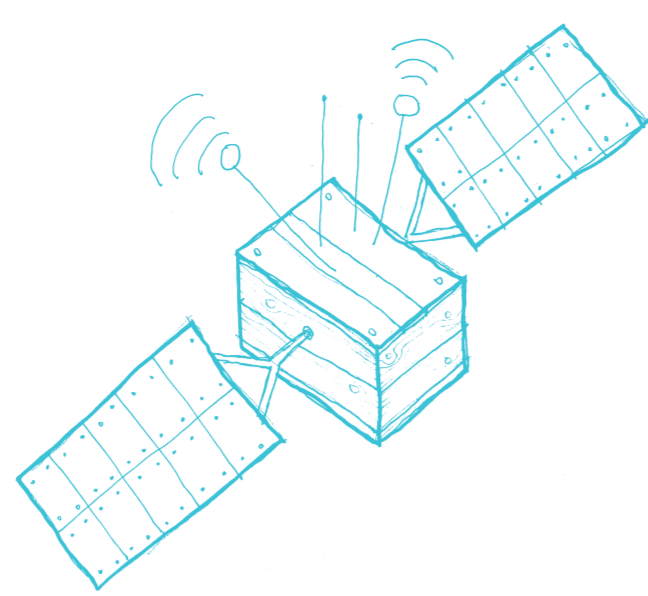
RESPONDING TO THE IDEA OF THE SOAPBOX: IF YOU WERE GIVEN A SOAPBOX TO STAND ON, WHAT WOULD YOU TELL THE WORLD? OR WHAT WOULD YOU ASK THEM? HOW MIGHT YOU USE A SOAPBOX TO COMMUNICATE IDEAS, OTHER THAN AS A PLATFORM?

SOAPBOX OPERATIONS MANUAL

SOUTHBANK CENTRE

WWW.SOUTHBANKCENTRE.CO.UK/SOAPBOX

SOUTHBANK CENTRE



WELCOME TO OPERATION SOAPBOX!

This Soapbox Satellite is one of hundreds sent out to young people around the UK, from a Base Station in London. Each carries a single question to prompt a journey of exploration. Your satellite will dock with you for the next few months as you explore the following questions:

WHAT ISSUES DO YOU, AS YOUNG PEOPLE IN 2007/08, REALLY WANT TO SHARE WITH THE WORLD?

WHAT IS THE BEST WAY OF COMMUNICATING THOSE ISSUES?

HOW CAN YOU HELP PEOPLE YOU DON'T KNOW GET INSIDE YOUR MINDS AND SEE THINGS THE WAY YOU DO?

WHY A SOAPBOX?

Your Soapbox Satellite is both a tool to help you in your explorations, and a space where you can express your ideas. You can stand on your soapbox, perform on it, write on it. You could put things in it for others to discover, or collect ideas in it from other people. You could grow things in it or build something out of it. And those are only a few ideas.

MORE INSPIRATION ON HOW TO WORK WITH YOUR SOAPBOX:

In May 2008, you will send back your findings to be showcased in a national exhibition at Southbank Centre. What do you want to show to the rest of the world? What ideas or questions will you share? What arguments will you make? We look forward to working with you on this journey of exploration.

GETTING YOUR POINT ACROSS

HOW CAN YOU EXPRESS AN IDEA THAT MATTERS TO YOU IN AN INTERESTING WAY THAT DRAWS OTHER PEOPLE IN?

1 BY MAKING AN ARGUMENT THAT CAPTURES OTHERS' IMAGINATIONS.

The WWF (Worldwide Fund For Nature) is one of many organisations in the world working to educate people about climate change, and to encourage them to change their lifestyle in order to save their planet. Rather than just painting a picture of doom and gloom, and scaring people into doing something, they have developed the concept of One Planet Living. In simple language and images, they point out that if everyone in the world lived in the same way as people do in the UK, we would need three Planet Earths to support us. We therefore need to find ways to use less resources, so that our planet – the only one we have – will stay healthy and be able to provide for the global population.

2 BY ASKING A CHALLENGING QUESTION.

Erwin Schrödinger was a Nobel prize-winning physicist. In 1943, through a series of public lectures in Dublin, Ireland, Schrödinger posed the vast question 'What is Life?' The following year he published a book of this title, challenging scientists to use their skills to help identify the 'building-blocks' of life. 'How can the events in space and time which take place within the spatial boundary of a living organism be accounted for by physics and chemistry?' he asked. Francis Crick, to look for some answers through the study of genetics. The pair went on to discover the structure of DNA: the special molecules inside cells that pass genetic information from one generation of living beings to another, influencing how we develop, look and behave. Crick and Watson won the Nobel prize themselves for this discovery, which changed the whole way we look at and understand life, and inspired a further generation of scientists.

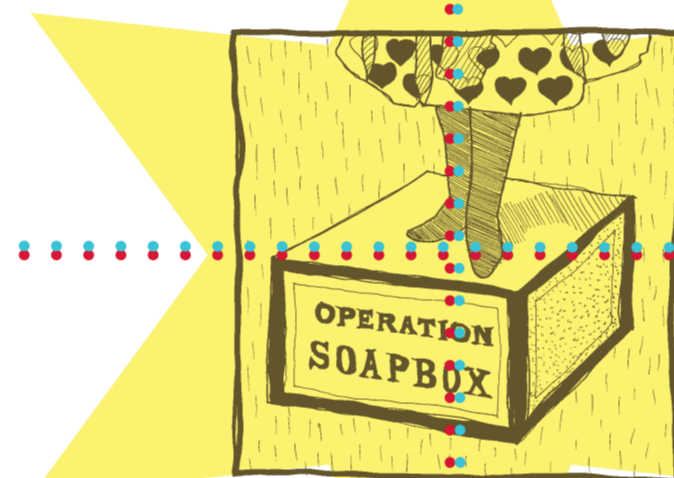
3 BY SETTING AN INSPIRING EXAMPLE.

Mahatma Gandhi, a lawyer, was a leader of the independence movement in India. Until Gandhi and his comrades led their campaign, resulting in the establishment of an independent India in 1945, his country had been under the colonial rule of the British Empire. One of the things that makes Gandhi special, and different from other 'freedom-fighters' or rebels, is his commitment to a philosophy of non-violence. Rather than physically fight oppressors, Gandhi and his followers made their presence felt through marching, sit-ins, refusal to pay taxes, and fasting. 'An eye for an eye makes the whole world blind,' said Gandhi. His example of non-violent protest continues to inspire protestors all over the world today.

4 BY COMMUNICATING SOMETHING IN AN UNUSUAL AND CREATIVE WAY.

The Spanish painter, Pablo Picasso, is acknowledged as one of the greatest artists of the 20th century. As a founder of the Cubist movement, he helped move art away from trying to represent reality. Picasso was a pacifist, and used one of his most famous works – *Guernica* – to communicate the brutality and bleakness of war. A huge oil painting, it depicts the Nazi bombing of a town in Spain in 1937, during which hundreds of people died. Picasso started work on the painting only a week after the bombing, saying, 'I clearly express my abhorrence of the military caste which has sunk Spain in an ocean of pain and death.' The painting still has tremendous power today, with the agonised faces and contorted bodies of people and animals confronting the viewer. Without using a single word, Picasso makes us feel horror at what humans are capable of.

NOW THAT YOU'VE LOOKED AT HOW OTHER PEOPLE HAVE COMMUNICATED THEIR IDEAS, HOW WILL YOU TELL THE WORLD ABOUT YOURS?



THE SOAPBOX STORY

Soapboxes are a symbol in the UK of independent political expression. When people 'get on their soapbox', we mean that they stand up and tell the world loudly and clearly what matters to them. They usually aim to convince their listeners that what they are saying is the right thing.

These days 'to get on your soapbox' is simply an expression. But in the past people really did stand on soapboxes to voice their opinions.

Soap used to be sent from factories to shops in sturdy wooden boxes. Once the soap was unpacked, these boxes became useful for all kinds of other things, for instance in a 'soapbox derby', when children built go-karts from soapboxes and raced them down hills. Another use for soapboxes was as portable stages. Speakers would stand on them at political rallies and other events so they could be easily seen by the crowd.

Soapbox speeches are often impromptu, which means they are not official or planned speeches.

Speakers Corner, on the edge of one of London's biggest parks, has been a place for people to get on their soapboxes since 1855. You can still go there today and see people standing on boxes, ladders and other pieces of equipment to make their point to anyone who will stop and listen. Speakers Corner is special: it was the first place in the world to allow people to exercise their right to free speech, after Parliament passed the Right to Assembly Act in 1872. This meant that anyone who went there could, theoretically, say whatever they liked without fear of trouble from the authorities. The tradition continues to this day. Speakers Corners rules are that you can say what you like as long as what you say is not blasphemous, obscene or likely to cause a riot.

FIND OUT MORE ABOUT SPEAKERS CORNER AT WWW.SPEAKERSCORNER.NET

OPERATION SOAPBOX GIVES YOU A 21ST CENTURY SOAPBOX. WHAT WILL YOU DO WITH IT?

LOG ON TO

WWW.SOUTHBANKCENTRE.CO.UK/ SOAPBOX

★ **DOWNLOAD PODCASTS AND FILMS**

★ **SEE WHAT OTHERS ARE DOING WITH THEIR SOAPBOXES**

★ **UPLOAD YOUR IDEAS AND DISCOVERIES**

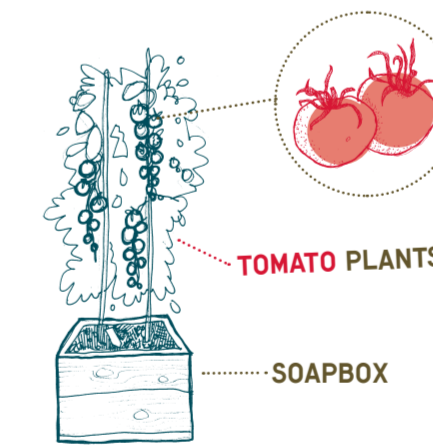
EXAMPLES OF HOW YOU MIGHT USE YOUR SOAPBOX

GROUP A

THE ISSUE THEY CHOSE

HEALTHY EATING: THE GROUP IS CONCERNED ABOUT HOW HARD IT CAN BE TO FIND GOOD HEALTHY FOOD GROWN LOCALLY. THEY DECIDE TO SET AN EXAMPLE BY USING THEIR SOAPBOX FOR A GROWING PROJECT OF THEIR OWN.

WHAT THEY DID



TOMATO PLANTS

SOAPBOX

WHAT THEY SENT BACK

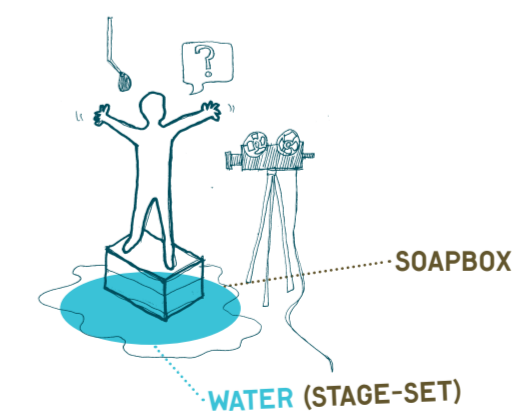


JAR OF HOMEMADE TOMATO SAUCE

RECIPE FOR SAUCE

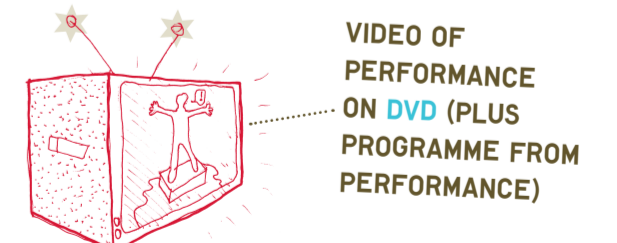
GROUP B

CLIMATE CHANGE: THE GROUP LIVE IN AN AREA WHERE THERE HAVE BEEN TERRIBLE FLOODS. MANY HAVE HAD THEIR HOMES DAMAGED, AND LOST POSSESSIONS. THEY USE THEIR SOAPBOX FOR A PERFORMANCE, EXPLORING HOW THE FLOODS AFFECTED LOCAL PEOPLE, AS WELL AS SOME OF THE REASONS THEY MIGHT HAVE HAPPENED.



SOAPBOX

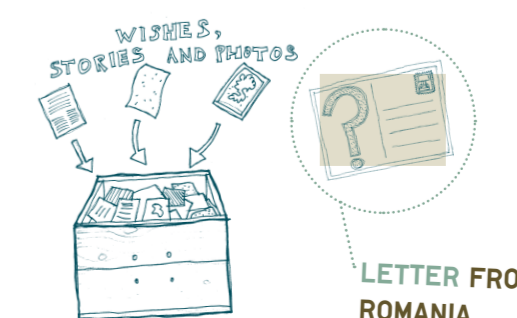
WATER (STAGE-SET)



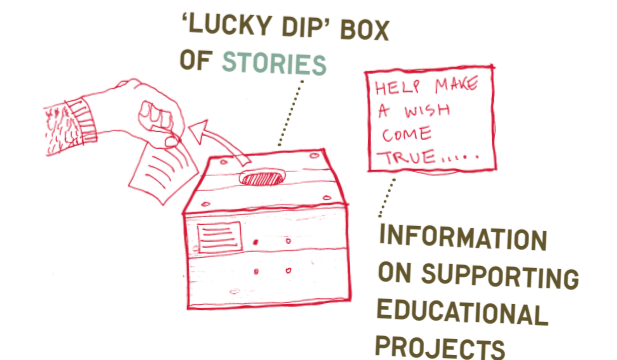
VIDEO OF PERFORMANCE ON DVD (PLUS PROGRAMME FROM PERFORMANCE)

GROUP C

GLOBAL DEVELOPMENT: THE GROUP IS CONCERNED THAT CHILDREN IN ROMANIA OFTEN DO NOT RECEIVE A FULL EDUCATION FOR A YEAR. THEY COMMUNICATE WITH ROMANIAN CHILDREN ABOUT THEIR LIVES, THEN USE THEIR SOAPBOX TO COLLECT THEIR STORIES AND PHOTOS.



LETTER FROM ROMANIA



'LUCKY DIP' BOX OF STORIES

INFORMATION ON SUPPORTING EDUCATIONAL PROJECTS